

# PRIVATE PENDER ISLAND ACREAGE



3707 STARBOARD CRESCENT





## 3707 STARBOARD CRESCENT

6 BEDS ~ 2 BATHS ~ 2,150 SQFT

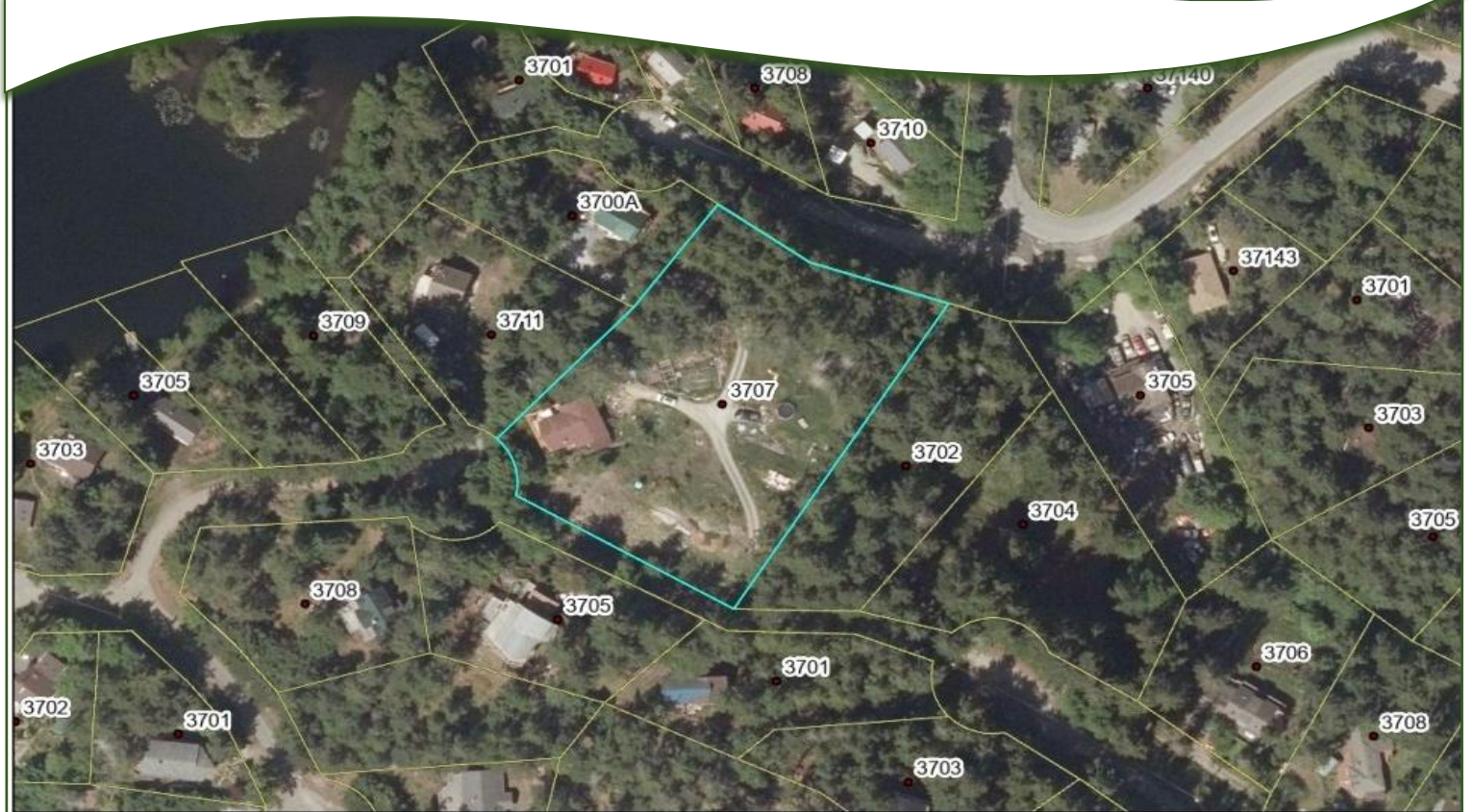
Tucked away at the end of a quiet no-thru road, this rare 1.52-acre park-like sanctuary unveils itself via a long, winding, partially paved driveway. Meticulously upgraded top-to-bottom by a reputable local contractor, this 6BR, 2BA home blends elevated craftsmanship with island soul. Vaulted ceilings & a sizable kitchen with island are the anchor on the main floor. Step outside to catch the treetop light & Buck Lake glimpses from over 500 square feet of southwest-facing decks. With two finished floors offering approximately 2150 square feet of living space, there's abundant room for both family & guests - plus the potential for separate, private accommodation. A heat pump ensures effortless year-round comfort. Utterly secluded, yet still within minutes from Buck Lake, Thieves Bay Marina, the Disc Golf Park & Magic Lake Market. The detached two-car garage is the final exclamation point. Truly a rare gem - your island life starts here!



# PLOT PLAN & AERIAL VIEW

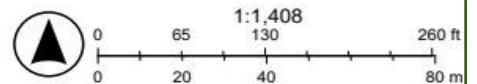


3707 STARBOARD CRESCENT



7/10/2026, 9:47:57 AM

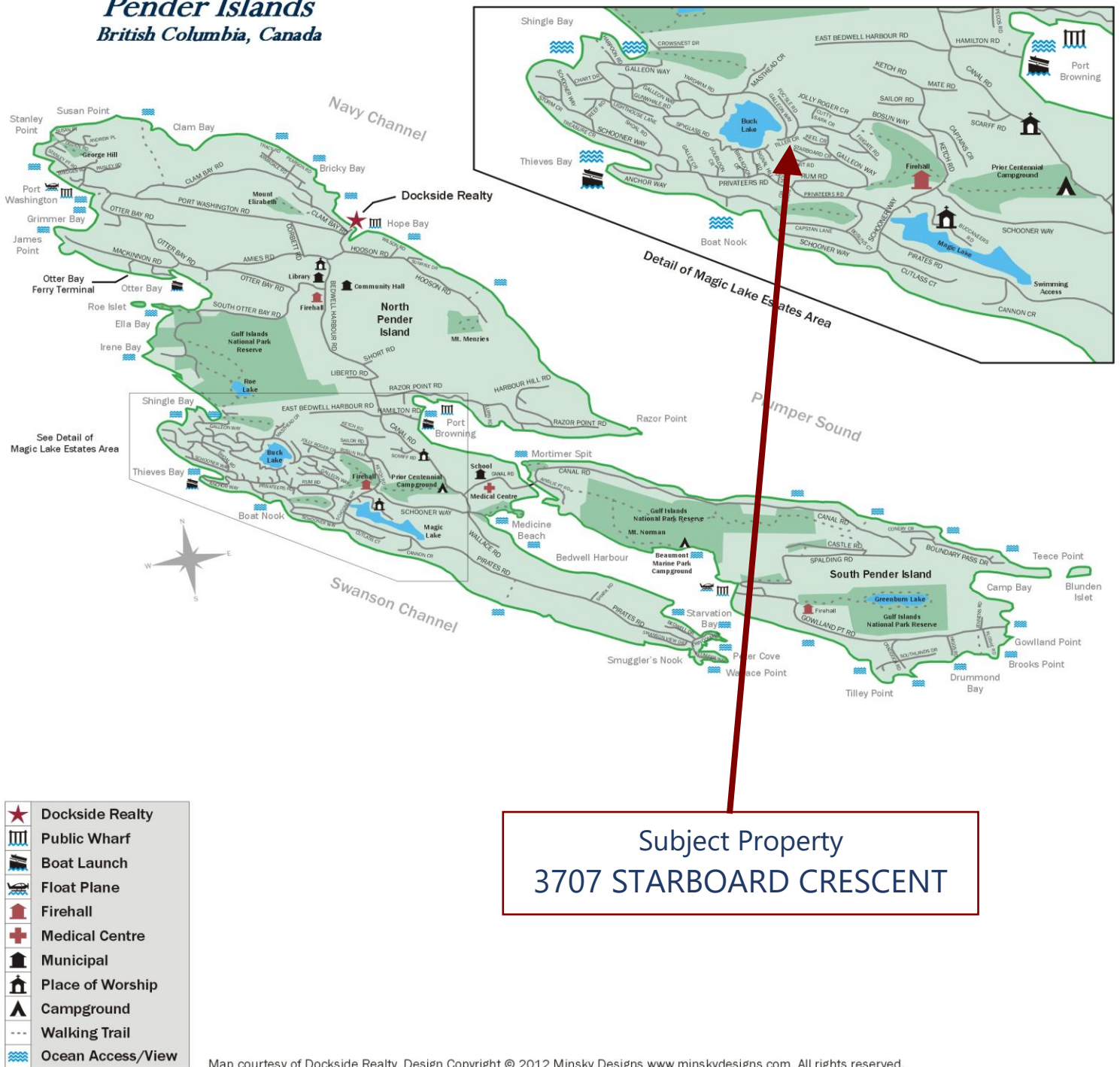
Property Boundaries
  Property Boundaries  
 Civic Address
 World\_Hillshade



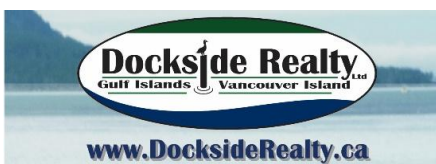
Sources: Esri, TomTom, Garmin, FAO, NOAA, USGS, © OpenStreetMap contributors, and the GIS User Community. Sources: Esri, Vantor, Airbus DS.

# PENDER ISLAND MAP

## *Pender Islands* British Columbia, Canada



**DISCLAIMER:** While every effort is made to provide reliable information, Dockside Realty Ltd. makes no representations or warranties as to the accuracy of this brochure. All measurements are approximate; the buyer is responsible for verifying all data provided.



**Pender Island • Saturna Island • Vancouver Island**  
**info@DocksideRealty.ca • 250-629-3166**